

Omega-3 Fatty Acid Blood Levels Clinical Significance and Controversy

H. Robert Superko, MD, FAHA, FACC; Scott M. Superko; Khurram Nasir, MD;
Arthur Agatston, MD, FACC; Brenda C. Garrett, RN

The relationship of fish and dietary omega-3 fatty acids and cardiovascular disease (CVD) has been investigated in numerous studies and comprehensive reviews and recommendations exist, but guidance on blood concentrations is missing.¹⁻⁴ Some prospective fish oil treatment investigations report a significant reduction in CVD events but others do not.⁵⁻⁷ A recent meta-analysis did not find a statistically significant relationship between omega-3 consumption and CVD mortality, but it failed to take into account the implications of variability in individual blood levels of omega-3 fatty acids.⁸

Blood levels of omega-3 fatty acids can be influenced by dietary intake of omega-3 fatty acids and intake with oral supplements. The Multiple Risk Factor Intervention Trial reported in 1995 that serum omega-3 fatty acids blood levels were inversely correlated with coronary heart disease (CHD).⁹ An association of dietary sources of nonfried fish and blood levels of eicosapentaenoic acid (EPA) + docosahexaenoic acid (DHA) were reported in the Atherosclerosis Risk In Communities (ARIC) investigation and the Multi-Ethnic Study of Atherosclerosis (MESA) investigations.^{10,11}

Blood levels of dietary omega-3 fatty acids can vary based on geography and diet habits. For example, Japanese living in Japan have higher blood omega-3 fatty acid levels than whites living in Pennsylvania and Japanese Americans living in Honolulu. The lower 5th percentile of blood omega-3 fatty acids in the Japanese living in Japan is higher than the mean levels in whites and Japanese Americans even though total fat is comparable.¹²

The purpose of this review is to explore insight derived from clinical investigations reporting blood or plasma levels of omega-3 fatty acids and the relationship to CHD risk that may shed light on the fish oil controversy. A National Library of Medicine PubMed search was conducted with the key words omega-3, coronary artery disease, and blood concentration. One hundred eighty-five citations were identified and reviewed for relevance to coronary atherosclerosis and data on omega-3 supplementation type and dose, duration of treatment, laboratory methodology, cardiovascular associations, and blood, plasma, or serum measurements. Twenty-nine reports were identified for inclusion, and 13 reports using

doses of fish oil supplements between 1 and 6.7 g/d were identified (Table 1).

Variability of Individual Blood Level Response to Omega-3 Supplementation

Blood levels of fatty acids can be determined by different laboratory methods. The Red Blood Cell method heats a Red Blood Cell aliquot with boron trifluoride methanol, and the fatty acid methyl esters are extracted and analyzed by gas chromatography. The sum of EPA+DHA, as a percentage of total fatty acids, is referred to as the omega-3 index, and patients have been classified as having a low (high-risk) omega-3 index if the index is <4%. The clinical evidence using the Red Blood Cell method has been reviewed.⁴⁰ Chromatography is a laboratory method based on the differential rate of separation of compounds and typically involves plasma lipid extraction and methylated fatty acids analyzed by using a gas chromatograph and a capillary column.⁴¹ Mass spectrometry separation is a third method in which plasma fatty acid concentration is determined by the use of a liquid chromatography mass spectrometric method.⁴²

Individual differences in response to a fixed dose of fish oil can vary considerably. This variation makes prediction of an individual patient's blood level response to a specific dose problematic. If the blood level response of a population is normally distributed, ≈68% of the individuals will have a value within 1 standard deviation (SD) of the mean with 16% >1 SD and 16% <1 SD. Figure 1 illustrates EPA blood level ranges (mean±SD) pre- and postdosing in studies for which information is reported. Figures 2 and 3 summarize the pre- and postdosing values for DHA and EPA/arachidonic acid (AA), respectively.

Short-Term Studies

A short-term 48-hour metabolic ward fish oil feeding study in healthy volunteers fed 4 g of fish oil reported that the baseline EPA was 0.54% of phospholipid fatty acids and, at 8 hours, had increased between 62% and 80%.³¹ The authors concluded that a large variability in fatty acid blood levels was observed. A slightly longer 28-day fish oil study

From Celera, Alameda, CA (H.R.S.); Cholesterol, Genetics, and Heart Disease Institute, Portola Valley, CA (H.R.S., B.C.G.); Mercer University School of Pharmaceutical Sciences, Atlanta, GA (H.R.S.); University of California, Davis (S.M.S.); Center for Prevention and Wellness Research, Baptist Health Medical Group, Miami Beach, FL (K.N., A.A.); Department of Medicine, Herbert Wertheim College of Medicine, Miami, FL (K.N., A.A.); Department of Epidemiology, Robert Stempel College of Public Health, Florida International University, Miami, FL (K.N.); and The Johns Hopkins Ciccarone Center for the Prevention of Heart Disease, Baltimore, MD (K.N.).

Correspondence to H. Robert Superko, 40 Bear Paw, Portola Valley, CA 94028. E-mail HighHDL@mac.com

(*Circulation*. 2013;128:2154-2161.)

© 2013 American Heart Association, Inc.

Circulation is available at <http://circ.ahajournals.org>

DOI: 10.1161/CIRCULATIONAHA.113.002731

Table 1. Investigations Reporting Plasma, Serum, or Whole Blood Measurements of Omega-3 Fatty Acids

Author (ref)	n	Subjects	Study Method	Sample Type	Findings
Anderson ¹³	174	Random population without DM	Follow-up study	Plasma	Omega-3 fatty acids predict CV mortality independent of pulse wave velocity.
Albert ¹⁴	281	Healthy men 17-y follow-up	Observational	Blood	Reduction in sudden death related to EPA+DHA+DSA%
Baylin ¹⁵	3338	MI vs control	Case control genetic study	Plasma	EPA and DHA higher in carriers of <i>FADS2</i> T allele but not related to CHD status.
Chung ¹¹	900	MESA study	Observational	Blood	EPA and DHA correlated with nonfried fish consumption
DiStasio ¹⁶	36	Healthy subjects	Dosing study	Plasma	1 g/d omega-3 increases blood levels 2- to 3-fold in 1 wk
Donadio ¹⁷	73	IgA nephropathy	Randomized, open label, 2 y, 2 doses 3.35 or 6.70 g/d	Plasma	3.35 g/d increased EPA from 0.8% to 3.6% and DHA from 3.7% to 6.7% 6.7 g/d increased EPA from 0.9% to 4.9% and DHA from 3.5% to 7.4%
Donadio ¹⁸	73	IgA nephropathy	Randomized open label, 2 y, 2 doses 3.35 or 6.70 g/d	Plasma	Omega-3 supplementation slowed the rate of renal loss
Hayakawa ¹⁹	206	Stable angina pectoris	Observational	Plasma	Complex coronary lesions associated with lower plasma EPA/AA
Hogg ²⁰	96	IgA nephropathy	Randomized, double-blind 12-mo trial	Plasma	Superiority of omega-3 fatty acids over placebo in slowing progression of renal disease
Itakura ⁵	16 397	TC >250 mg/dL	JELIS. Low-dose statin, then randomized to omega-3 or not.	Plasma	Coronary event risk reduced when plasma EPA >150 µg/mL or EPA/AA >0.75
Khaw ²¹	3841	EPIC-Norfolk	Nested case control	Plasma	Omega-3 plasma fatty acids inversely related to CHD but no longer significant after multivariate adjustment
Laidlaw ²²	31	Healthy women	Randomized trial	Serum	4 g EPA+DHA per day increased omega-3 fatty acids 5.6% to 14.4% fatty acids by weight and the EPA/AA from 0.12 to 0.88
Lockyer ²³	100	Free living	Genetic diet and supplement intervention study	Plasma	Increase in EPA but no difference based on ApoE genotype
Lindberg ²⁴	254	Acutely ill elderly	Follow-up study	Plasma	Mortality higher in patients with EPA in lowest quartile
Matsuzaki ²⁵	3664	MI, AP, or PCI with LDL-C >170 mg/dL	JELIS. Low-dose statin, then randomized to omega-3 or not.	Plasma	Cardiac death or MI was significantly lower in the group with the highest EPA/AA ratio vs the lowest ratio
Moyers ²⁶	992	VA hospital	Observational Heart & Soul Study	Whole blood	EPA+DHA associated with exercise capacity and HR recovery
Mozaffarian ²⁷	2692	Older healthy	Prospective cohort	Plasma	Omega-3 fatty acids associated with fewer CV events
Nigam ²⁸	734	Acute coronary syndrome	Observational	Plasma	Metabolic syndrome patients had lower EPA and DHA levels vs those without the metabolic syndrome
Poppitt ²⁹	95	Ischemic stroke patients	Randomized, double-blind trial omega-3 and CVD and mood	Serum	Following a 30% increase in omega-3 fatty acids for 12 wk, no effect was seen
Porttala ³⁰	956	CHD in older men, Heart & Soul Study	Observational	Blood	EPA+DHA <3.6% revealed greater mortality <i>P</i> =002
Raatz ³¹	10	Healthy adults	Randomized, crossover 48-h absorption study	Plasma	Emulsified fish oil had enhanced absorption compared with capsular fish oil
Rupp ³²	11	Healthy	Dosing study	Whole blood	EPA 0.6% to 1.4% within 10 days, DHA 2.9% to >4.3%, after withdrawal returned to baseline in 10 days
Schaeffer ³³	727	German Health Survey	Genetic study	Serum	FADS polymorphisms associated with AA, EPA, and DPA
Shintani ³⁴	43	JELIS CAD patients with angiography	Abstract 2012 ACC Randomized to EPA or ezetimibe	Blood	Reduction in soft plaque when EPA/AA increased from 0.40 to 1.34
Simon ³⁵	188 men	Multiple Risk Factor Intervention Trial	Nested case control	Serum	DPA inversely associated with CHD risk
Vedin ³⁶	16	Alzheimer's disease patients	Genetic study	Plasma	Omega-3 supplementation affects expression of genes influencing inflammation.

(Continued)

Table 1. Continued

Author (ref)	n	Subjects	Study Method	Sample Type	Findings
Virtanen ³⁷	1857	No CHD, Kuopio Ischaemic Heart Disease Risk Factor Study	Observational	Serum	DHA associated with sudden cardiac death but only in subjects with lower hair mercury content
Virtanen ³⁸	2174	Kuopio Ischaemic Heart Disease Risk Factor Study	Observational	Serum	DHA associated with reduced AF risk
Wang ²	2909	Atherosclerosis Risk in Communities Study	Observational	Plasma	Incidence of DM positively associated with palmitic, palmitoleic, and dihomo-g-linolenic acids and inversely with linoleic acid
Wu ³⁹	3326	Free of CHD and >65 y of age	Observational	Plasma	Higher levels of DHA associated with lower AF risk

AA indicates arachidonic acid; ACC, American College of Cardiology; AF, atrial fibrillation; ApoE, apolipoprotein E; CAD, coronary artery disease; CHD, coronary heart disease; CV, cardiovascular; CVD, cardiovascular disease; DHA, docosahexaenoic acid; DM, diabetes mellitus; DPA, docosapentaenoic acid; DSA, docosapentaenoic acid; EPA, eicosapentaenoic acid; HR, heart rate; IgA, immunoglobulin A; LDL-C, low-density lipoprotein cholesterol; MI, myocardial infarction; PCI, percutaneous coronary intervention; and TC, total cholesterol.

involved 31 healthy subjects who were supplemented with 4 g/d EPA+DHA and mean (\pm SD) plasma levels of EPA increased from $1.12\pm 0.37\%$ to $6.36\pm 1.47\%$, and plasma levels of DHA increased from $3.41\pm 0.71\%$ to $6.37\pm 0.62\%$.²² If the response is normally distributed, this implies that $\approx 68\%$ of the subjects would increase the EPA to a range of 4.89% to 7.83% with 16% of the subjects <4.89% and 16% of the subjects >7.83%.

Another short-term 10-day study in 11 subjects fed a lower, and more common clinical dose of 1 g/d EPA, revealed that the blood EPA level increased from approximately $0.6\pm 0.4\%$ to $1.4\pm 0.5\%$ of total fatty acids.³² The total EPA+DHA blood levels increased from a mean of 3.6% to 5.4%, but $\approx 16\%$ would have achieved an EPA+DHA blood level <4.8%. Rupp et al³² have suggested that an EPA+DHA level >3.5% is the range in which sudden coronary death reduction can be observed and a dramatic reduction when EPA+DHA >5% is achieved. These studies indicated that individual variability in blood levels could leave a substantial number of patients at elevated CHD risk because of failure to achieve a therapeutic blood level.

Intermediate to Long-Term Studies

Longer-term studies range from 2 months to 4 years. In response to a diet supplemented with 6 g/d DHA-enriched fish oil capsule for 8 weeks, DHA rose from $\approx 4\%$ of total fatty acids to 8.3% with a SD of 4.4%.²³ The effect of 1, 2, and 4 g/d n-3 polyunsaturated fatty acid (PUFA) ethyl esters was reported

in 36 healthy individuals treated for 12 weeks.¹⁶ Plasma n-3 PUFA increased from a mean 5.06 mol% to 10.40 ± 1.70 in the 1 g/d group, 5.67 mol% to 12.11 ± 2.15 in the 2 g/d group, and 5.54 mol% to 16.15 ± 2.08 in the 4 g/d group. The investigators noted individual variability in baseline DHA levels that varied between 1.0 and 6.3 mol%. This study was unique in that blood levels were assessed after 4 weeks of supplement wash out, at which time blood levels had returned close to baseline values.

Intermediate-term studies have been reported in populations with immunoglobulin A nephropathy, ischemic stroke, and Alzheimer's disease. In patients with immunoglobulin A nephropathy, 2 years of treatment with either 3.35 g/d total omega-3 fatty acids increased EPA from $0.8\pm 0.5\%$ to $3.1\pm 1.3\%$ after treatment and increased DHA from $3.7\pm 1.6\%$ to $6.5\pm 1.3\%$. Treatment with 6.70 g/d total omega-3 fatty acids increased EPA from $0.9\pm 0.6\%$ to $5.2\pm 1.8\%$ and DHA from $3.5\pm 1.4\%$ to $7.1\pm 1.6\%$.¹⁸ Patients with Alzheimer's disease treated with a lower dose of 2.3 g/d total omega-3 fatty acids increased DHA from $\approx 4.7\pm 1.8\%$ to $8.1\pm 2.0\%$ after treatment, and EPA increased from $\approx 2.1\pm 1.5\%$ to $5.3\pm 1.8\%$ after treatment.³⁶ Finally, in stroke patients treated with a more common clinical dose of 1.2 g/d total omega-3 fatty acids, EPA increased from $1.24\pm 0.91\%$ to $1.63\pm 0.72\%$, DHA increased from $3.90\pm 1.12\%$ to $5.29\pm 1.31\%$, and compliance was reported to be 90%.²⁹ The wide range of blood levels in these studies reflects the substantial individual variability in response to a fixed dose.

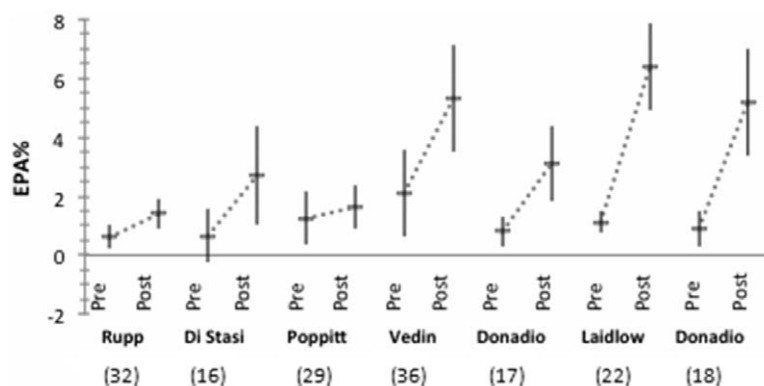


Figure 1. Blood levels (mean \pm SD) of EPA as a percentage of total fatty acids pre- and postdosing. Data points are identified by author and ranked by daily dose (low to high). Fish oil doses were as follows: Rupp, 1 g/d³²; Di Stasi, 1 g/d¹⁶; Poppitt, 1.2 g/d²⁹; Vedin, 2.3 g/d³⁶; Donadio, 3.35 g/d¹⁷; Laidlow, 4 g/d²²; Donadio, 6.7 g/d¹⁸. EPS indicates eicosapentaenoic acid; and SD, standard deviation.

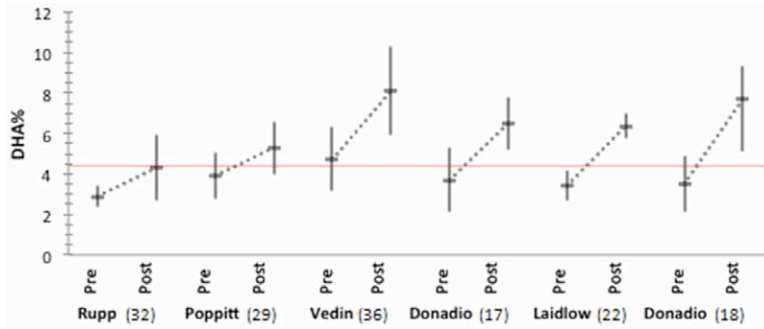


Figure 2. Blood level (mean \pm SD) of DHA as a percentage of total fatty acids pre- and postdosing. Red line indicates the level, suggested by Wu et al,³⁹ above which atrial fibrillation risk may be reduced. DHA indicates docosahexaenoic acid; and SD, standard deviation.

EPA/AA Ratio as Therapeutic Goal

The blood EPA/AA ratio may be a clinically relevant measurement and also has substantial individual variability (Figure 3). An EPA/AA ratio >0.75 has been associated with a significantly lower number of major coronary events in a Japanese population.⁵ In the 28-day dosing investigation noted above, the mean EPA/AA ratio increased from ≈ 0.12 to 0.9^{22} . Approximately 68% of the subjects would obtain an EPA/AA between 0.78 and 1.02, whereas 16% would be <0.78 . Even with 4 g/d omega-3 supplementation, $\approx 16\%$ of subjects would not have achieved the putative EPA/AA goal.⁵ In patients with immunoglobulin A nephropathy, treated with 4 gm/d fish oil, the mean EPA/AA increased from $\approx 0.09 \pm 0.07$ to 0.45 ± 0.40 with a wide range of individual variability.^{17,18,20} In coronary artery disease (CAD) patients treated with 1.8 g/d EPA, the EPA/AA ratio increased from a mean of 0.40 ± 0.20 to 1.34 ± 0.34 ($P < 0.001$).³⁴ Finally, in the 4-year Japanese EPA Lipid Intervention Study (JELIS), consumption of 1.8 g/d EPA resulted in an EPA/AA ratio increase from ≈ 0.6 to 1.3 with a SD of 0.3²⁵. These reports indicate that a large segment of the population treated with 2 to 4 g/d fish oil would not achieve the reputedly beneficial goal of EPA/AA >0.75 .

Genetic Polymorphisms

Genetic polymorphisms may help to explain part of the observed individual variability in blood levels. Three single-nucleotide polymorphisms in the FADS1 FADS2 gene cluster are related to PUFA proportions in plasma phospholipids.⁴⁴ The d-5 and d-6 desaturases, encoded by FADS1 and FADS2 genes, are key enzymes in PUFA metabolism. The C allele of rs174546, in the FADS gene cluster, appears to be associated with high total and high-density lipoprotein cholesterol in subjects with a high dietary intake of n-6 PUFA but not in those with low intake.⁴⁵ In subjects with

and without CAD carrying FADS haplotypes, the number of FADS risk alleles appears to be related to CAD risk.⁴⁶ Depending on genetic variants, requirements of dietary PUFA intake to achieve comparable biological effects may differ. The consumption of omega-3 fatty acids may also affect the expression of genes that influence inflammatory processes and play a role in CAD risk such as the anaphase-promoting complex subunit 5 (*ANAPC5*) and Ras homolog gene family member B (*RHOB*).

The impact of genetic polymorphisms in the cytochrome P450 system may also have clinical relevance for omega-3 fatty acids in the setting of dual-antiplatelet therapy. The OMEGA-PCI study investigated the effect of adding 1 g of omega-3 ethyl esters in patients treated with aspirin and clopidogrel.⁴⁷ The investigators reported that the addition of the omega-3 ethyl ester significantly reduced maximal platelet aggregation by 13.3% ($P = 0.026$). Upon further evaluation, at least 1 loss-of-function variant of CYP2C19*2 was found in 30% of the patients, and, in these patients, maximal platelet aggregation was reduced by 21.4% ($P = 0.006$). There was no difference in platelet aggregation in patients with the 1*/1* variant.

Clinical Implications of Blood Omega-3 Plasma Values

There are at least 3 plasma or blood omega-3 values that appear to have clinical utility in predicting CVD risk or benefit. Values can be reported as an absolute amount in micrograms per milliliter, as a percentage of total fatty acids, or as a ratio such as EPA/AA. Uncertainty remains as to which value is the most clinically relevant for what type of patient, or disorder. This issue is complicated by the fact that various clinical trials have used different populations with different dietary habits, different proportions of omega-3 fatty acid supplements, different doses, and different time lengths of treatment.

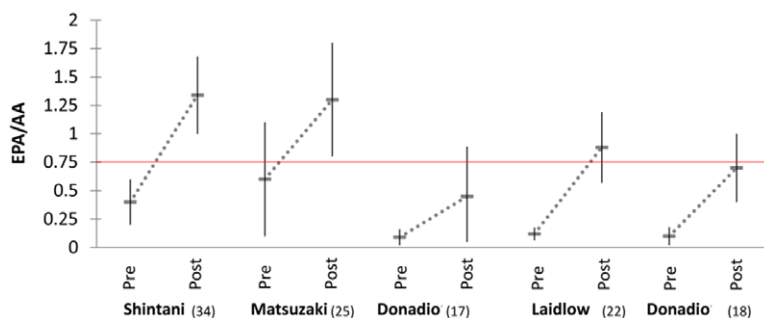


Figure 3. Blood levels (mean \pm SD) of EPA/AA at baseline and after treatment. Studies are ranked by daily dose low to high. Doses were as follows: Shintani, 1800 mg/d³⁴; Matsuzaki, 1800 mg/d²⁵; Donadio, 3.5 g/d¹⁷; Laidlow, 4.0 g/d²²; Donadio, 6.7 g/d¹⁸. The red line indicates a risk level suggested by Itakura et al.⁵ EPA/AA indicates eicosapentaenoic acid/arachidonic acid; and SD, standard deviation.

Primary Prevention

Determination of omega-3 blood levels appears to help identify high-risk groups in a primary prevention population (Table 2). In the Kuopio Ischaemic Heart Disease Risk Factor study, among the n-3 fatty acids, DHA was most strongly associated with a reduced risk of sudden cardiac death.³⁷ In a Japanese population (n=15534), fish oil supplementation (1.8 g/d) did not significantly reduce events in primary prevention patients.⁴⁸ However, in the subgroup that achieved plasma EPA concentration >133 µg/mL and an EPA/AA ratio > 0.75, a significant reduction in major coronary events was observed.⁵ The investigators suggested an EPA >150 µg/mL and EPA/AA ratio >0.75 as clinical goals for reduced cardiovascular risk in primary prevention. In the Physician Health Study higher blood levels of EPA+DHA+docosapentaenoic acid was associated with a significant reduction ($P=0.007$) in sudden death from cardiac causes after adjustment for confounders.¹⁴ The lowest quartile of EPA+DHA (<3.45%) indicated high risk, the second quartile (3.46%–4.16%) indicated a 45% reduction in risk, the third quartile (4.17%–4.98%) indicated a 72% reduction in risk, and the fourth quartile (>4.98%) indicated a 81% reduction in risk (EPA+DHA data by communication with the authors). The EPIC-Norfolk prospective study reported that, of the fish oil fatty acids, docosapentaenoic acid was significantly inversely associated with CHD (odds ratio, 0.72; $P<0.00001$).²¹ In an older primary prevention population study of 2692 individuals, and 30829 person-years, higher plasma levels of omega-3 fatty acids were associated with significantly fewer total and cardiovascular deaths, and individuals in the highest quintile lived an average of 2.2 years more after the

Table 2. Summary of Blood or Plasma Fatty Acids and Ranges Reported to be Associated With Risk by the Investigators in Primary Prevention Populations

Fatty Acid	Range	Risk
EPA		
Itakura ⁵	>150 µg/mL	Lower risk (suggested goal)
DHA		
Sekikawa ¹²	<1.0%	Highest IMT thickness in US whites
	<4.0%	Highest IMT thickness in Japanese
Virtanen ³⁷	>2.66%	Reduced SCD risk
Virtanen ³⁸	>2.85%	Reduced AF risk
Wu ³⁹	>3.54%	Reduced AF risk
EPA+DHA		
Albert ¹⁴	<3.45%	High risk (lowest quartile)
Sekikawa ¹²	>12.3%	Less coronary calcium in Japanese living in Japan
	>6.49%	Less coronary calcium in Japanese Americans
	>5.23%	Less coronary calcium in whites
Sandesara ⁴³	4.35%	Achieving EPA+DHA level did not prevent post-CABG surgery AF
EPA/AA		
Itakura ⁵	>0.75	Lower risk of MCE (suggested goal)

AA indicates arachidonic acid; AF, atrial fibrillation; CABG, coronary artery bypass grafting; DHA, docosahexaenoic acid; EPA, eicosapentaenoic acid; IMT, intima-media thickness; MCE, major coronary event; and SCD, sudden cardiac death.

age of 65 years.²⁷ Of the fatty acids, DHA was most strongly associated with fatal CHD and arrhythmic CHD death, illustrating the complexity of fatty acid type and relationship to cardiovascular disease. This study is also of relevance because few other studies have revealed a beneficial effect on mortality in an older population that is related to dietary variables.

Secondary Prevention and Peripheral Vascular Disease

Once CAD is diagnosed, measures of future CVD risk have important prognostic implications. Lower levels of n-3 fatty acids in coronary artery phospholipids have been associated with autopsy-documented CAD.⁴⁹ The Alpha Omega Trial reported that a margarine supplemented with 400 mg/d EPA+DHA had no effect on cardiovascular end points in patients with a myocardial infarction history but did not report blood levels.⁵⁰ The UCSF Heart and Soul prospective study, conducted in CHD patients, revealed that EPA+DHA levels >3.6% of total fatty acids were significantly associated with reduced all-cause mortality over 5.9 years.³⁰ Similarly, in Korean acute myocardial infarction patients, an EPA+DHA >4.74% was associated with reduced all-cause and CVD mortality, and a low EPA (<1.26%) was associated with high risk.⁵¹ In JELIS, CHD patients an EPA/AA ratios >1.06 was associated with the lowest cardiac death or myocardial infarction rates, and major coronary events were significantly reduced with EPA treatment ($P=0.048$).^{25,48} In the peripheral artery disease population, EPA supplementation reduced major coronary events 55% in comparison with 18% in the non-peripheral artery disease group, and the number needed to treat was 11 with the blood level of EPA increasing from a mean of 2.8 to 5.6 mol%.⁵² Table 3 summarizes fatty acid ranges reported to be associated with risk in secondary prevention populations.

Arteriographically Defined CAD

In postmenopausal CAD women, DHA levels above the median (2.50 mol%) revealed significantly ($P=0.009$) less

Table 3. Summary of Blood or Plasma Fatty Acids and Ranges Reported to be Associated With Risk by the Investigators in Secondary Prevention Populations

Fatty Acid	Range	Risk
EPA		
Lee ⁴⁰	<1.26%	High risk
Hayakawa ¹⁹	>111 µg/mL	Least complex coronary lesions
Ishikawa ⁵²	5.6%	Mean EPA% in treatment group and associated with reduced MCE.
EPA+DHA		
Pottala ³⁰	>3.6%	Reduced all-cause mortality
Lee ⁵¹	>4.74%	Reduced all cause and CVD mortality
EPA/AA		
Hayakawa ¹⁹	>0.88	Least complex coronary lesions
Matsuzaki ²⁵	>1.06	Lowest cardiac death or MI

AA indicates arachidonic acid; CVD, cardiovascular disease; DHA, docosahexaenoic acid; EPA, eicosapentaenoic acid; MCE, major coronary event; and MI, myocardial infarction.

atherosclerosis progression after 3.2 years of follow-up as determined by quantitative coronary angiography.⁵³ In patients with stable angina pectoris, an EPA/AA ratio >0.88 has been associated with the least complex lesions.¹⁹ The investigators suggested that the blood EPA/AA ratio is an appropriate target in patients with stable angina pectoris, and an EPA/AA >0.88 was associated with fewer complex coronary lesions.

Plaque Volume

A low serum content of EPA, DHA, and DPA has been associated with percent lipid volume and percent fibrous volume in 116 patients undergoing intravascular ultrasound.⁵⁴ In an arteriographic study of 43 patients, change in the EPA/AA ratio was related to a significant reduction in soft plaque volume, and the effect of EPA on plaque volume was independent of low-density lipoprotein cholesterol levels.³⁴

Atrial Fibrillation

Studies have assessed the association of omega-3 fatty acids with incident atrial fibrillation (AF) by estimating dietary intake without determining the actual blood levels, and mixed results have been reported.⁵⁵⁻⁵⁷

The Kuopio Ischemic Heart Disease Study assessed blood levels of omega-3 fatty acids in 2174 men for 17.7 years and reported that the highest blood levels of DHA+EPA+DPA were associated with a 50% lower risk of AF ($P=0.02$), and DHA was responsible for this effect.³⁸ This observation was confirmed in the Cardiovascular Health Study in 3326 US men and women over the age of 65 years who were initially free of AF or heart failure and followed for 14 years and were not taking fish oil supplements.³⁹ In these older healthy individuals, a DHA level in the 4th quartile (>4.37%) was associated with a significant 23% reduction in AF risk. These 2 studies suggest that it is the specific type of omega-3 fatty acid (DHA) that is associated with reduced AF risk.

Omega-3 fatty acids may be relevant for post-heart surgery AF. Early studies suggested that omega-3 supplementation may have reduced postoperative AF.^{58,59} Recent investigations have reported no significant effect of 1 to 6 g/d fish oil several days before surgery, continuing postsurgery for 7 to 10 days, and achieving a mean EPA+DHA of 4.35%.^{43,60,61} This suggests that supplementation around the time of heart surgery does not significantly reduce postoperative AF.

Coronary Calcification

The Rotterdam Study reported that fish consumption was correlated with coronary calcium scores.⁶² In the Honolulu Heart Study, Japanese living in Japan had 2-fold higher blood levels of omega-3 fatty acids than both whites living in Pennsylvania and Japanese Americans living in Honolulu.¹² The prevalence of coronary artery calcium in Japanese living in Japan was 9.3%, in whites it was 26.1%, and in Japanese Americans it was 31.4%. The highest median EPA+DHA% was associated with the lowest coronary artery calcium prevalence. Although significant differences in coronary artery calcium prevalence between Japanese in Japan and whites was present, these differences became nonsignificant after adjusting for serum omega-3 fatty acid levels.

Carotid Intima-Media Thickness

Estimates of dietary intake of omega-3 fatty acids and nonfried fish have been reported to be inversely related to subclinical atherosclerosis as assessed by carotid intima-media thickness (CIMT) (odds ratio, 0.69; $P<0.01$).⁶³ Plasma measurements of omega-3 fatty acids in a cross-sectional study of 487 Swedish men 61 years of age reported that plasma levels of EPA, but not DHA, were inversely associated with carotid and femoral intima-media thickness.⁶⁴

Ethnicity and environment may impact the relevance of omega-3 fatty acid measurements and CIMT. In a study comparing randomly selected Japanese men living in Japan and white American men living in the United States, CIMT correlated with DHA ($P=0.032$) but not EPA.⁶⁵ The Japanese men had 2-fold higher levels of DHA and EPA in comparison with white Americans, but only DHA levels revealed an inverse association with CIMT in both Japanese and white men. In Spanish dyslipidemic patients, the observation of a significant inverse relationship between DHA and CIMT was confirmed.⁶⁶

Conclusions

This review evaluated the evidence studying the relationship between blood levels of omega-3 fatty acids and CVD risk. Individual blood level response to omega-3 oral doses demonstrated significant variability. Study results demonstrated beneficial effects of omega-3 supplementation on CVD risk that appears to be concentrated in subjects who achieved the highest blood levels. This suggests that conclusions regarding the benefit of omega-3 fatty acids, based on studies that did not assess blood levels, may be confusing and misleading because of the inclusion of subjects who did not achieve a therapeutic blood level.⁸ For example, in the JELIS investigation, the risk of major coronary events was significantly decreased in the group with high (>150 $\mu\text{g}/\text{mL}$) on-treatment plasma EPA levels, but $\approx 39\%$ of subjects did not achieve that level despite 1800 mg/d EPA supplementation.⁵

The clinical significance of this information is that (1) there are physiological and genetic reasons for individual variability in blood levels achieved following a fixed dose of fish oil, (2) evidence exists supportive of the concept that the higher the blood level, the greater the effect on atherosclerosis and, owing to individual variability, the blood levels of omega-3 fatty acids may be better markers of CVD risk/benefit than simple assignment to a fixed dose of omega-3 supplementation, and (3) inclusion of subjects achieving less than therapeutic blood levels may have diluted the beneficial effect of omega-3 supplementation on clinical end points. In primary prevention patients, the JELIS study suggests an EPA blood level >133 $\mu\text{g}/\text{mL}$ or an EPA/AA ratio >0.75 is most protective (Table 2). In the United States, the Physician Health Study suggests an omega-3 index (EPA+DHA) > 4.17% reflects a 72% reduction in CVD risk.^{5,14} The clinical implications in secondary prevention include the UCSF Heart and Soul study that reported an omega-3 index >3.6% is associated with reduced all-cause mortality; in Korean acute myocardial infarction patients an omega-3 index > 4.74% was associated with reduced all cause and CVD mortality; and in Japanese patients, an EPA/AA ratio >1.06 is associated with the lowest

cardiac death or myocardial infarction rates (Table 3).^{25,30,51} Determination of blood omega-3 levels may help guide the appropriate use of dietary fish or omega-3 supplements in a personalized heart disease prevention strategy.

Disclosures

Dr Superko is Chief Medical Officer of Celera, a gene discovery company and part of Quest Diagnostics that provides an omega-3 fatty acid blood test. The other authors report no conflicts.

References

- De Caterina R. n-3 fatty acids in cardiovascular disease. *N Engl J Med*. 2011;364:2439–2450.
- Wang C, Harris WS, Chung M, Lichtenstein AH, Balk EM, Kupelnick B, Jordan HS, Lau J. n-3 Fatty acids from fish or fish-oil supplements, but not alpha-linolenic acid, benefit cardiovascular disease outcomes in primary- and secondary-prevention studies: a systematic review. *Am J Clin Nutr*. 2006;84:5–17.
- Baum SJ, Kris-Etherton PM, Willett WC, Lichtenstein AH, Rudel LL, Maki KC, Whelan J, Ramsden CE, Block RC. Fatty acids in cardiovascular health and disease: a comprehensive update. *J Clin Lipidol*. 2012;6:216–234.
- Fox K, Garcia MA, Ardissino D, Buszman P, Camici PG, Crea F, Daly C, De Backer G, Hjelm Dahl P, Lopez-Sendon J, Marco J, Morais J, Pepper J, Sechtem U, Simoons-Schotman M, Thygesen K, Priori SG, Blanc JJ, Budaj A, Camm J, Dean V, Deckers J, Dickstein K, Lekakis J, McGregor K, Metra M, Morais J, Osterspey A, Tamargo J, Zamorano JL; Task Force on the Management of Stable Angina Pectoris of the European Society of Cardiology; ESC Committee for Practice Guidelines (CPG). Guidelines on the management of stable angina pectoris: executive summary: The Task Force on the Management of Stable Angina Pectoris of the European Society of Cardiology. *Eur Heart J*. 2006;27:1341–1381.
- Itakura H, Yokoyama M, Matsuzaki M, Saito Y, Origasa H, Ishikawa Y, Oikawa S, Sasaki J, Hishida H, Kita T, Kitabatake A, Nakaya N, Sakata T, Shimada K, Shirato K, Matsuzawa Y; JELIS Investigators. Relationships between plasma fatty acid composition and coronary artery disease. *J Atheroscler Thromb*. 2011;18:99–107.
- Rauch B, Schiele R, Schneider S, Diller F, Victor N, Gohlke H, Gottwik M, Steinbeck G, Del Castillo U, Sack R, Worth H, Katus H, Spitzer W, Sabin G, Senges J; OMEGA Study Group. OMEGA, a randomized, placebo-controlled trial to test the effect of highly purified omega-3 fatty acids on top of modern guideline-adjusted therapy after myocardial infarction. *Circulation*. 2010;122:2152–2159.
- ORIGIN Trial Investigators, Bosch J, Gerstein HC, Dagenais FR, Diaz R, Dyal L, Jung H, Maggiono AP, Probstfield J, Ramachandran A, Riddle MC, Ryden LE, Yusuf S. n-3 fatty acids and cardiovascular outcomes in patients with dysglycemia. *N Engl J Med*. 2012;367:309–318.
- Rizos EC, Ntzani EE, Bika E, Kostapanos MS, Elisaf MS. Association between omega-3 fatty acid supplementation and risk of major cardiovascular disease events: a systematic review and meta-analysis. *JAMA*. 2012;308:1024–1033.
- Simon JA, Hodgkins ML, Browner WS, Neuhaus JM, Bernert JT Jr, Hulley SB. Serum fatty acids and the risk of coronary heart disease. *Am J Epidemiol*. 1995;142:469–476.
- Ma J, Folsom AR, Shahar E, Eckfeldt JH. Plasma fatty acid composition as an indicator of habitual dietary fat intake in middle-aged adults. The Atherosclerosis Risk in Communities (ARIC) Study Investigators. *Am J Clin Nutr*. 1995;62:564–571.
- Chung H, Nettleton JA, Lemaitre RN, Barr RG, Tsai MY, Tracy RP, Siscovick DS. Frequency and type of seafood consumed influence plasma (n-3) fatty acid concentrations. *J Nutr*. 2008;138:2422–2427.
- Sekikawa A, Curb JD, Ueshima H, El-Saed A, Kadowaki T, Abbott RD, Evans RW, Rodriguez BL, Okamura T, Sutton-Tyrrell K, Nakamura Y, Masaki K, Edmundowicz D, Kashiwagi A, Willcox BJ, Takamiya T, Mitsunami K, Seto TB, Murata K, White RL, Kuller LH; ERA JUMP (Electron-Beam Tomography, Risk Factor Assessment Among Japanese and U.S. Men in the Post-World War II Birth Cohort) Study Group. Marine-derived n-3 fatty acids and atherosclerosis in Japanese, Japanese-American, and white men: a cross-sectional study. *J Am Coll Cardiol*. 2008;52:417–424.
- Anderson BM, Ma DW. Are all n-3 polyunsaturated fatty acids created equal? *Lipids Health Dis*. 2009;8:33.
- Albert CM, Campos H, Stampfer MJ, Ridker PM, Manson JE, Willett WC, Ma J. Blood levels of long-chain n-3 fatty acids and the risk of sudden death. *N Engl J Med*. 2002;346:1113–1118.
- Baylin A, Ruiz-Narvaez E, Kraft P, Campos H. alpha-Linolenic acid, Delta6-desaturase gene polymorphism, and the risk of nonfatal myocardial infarction. *Am J Clin Nutr*. 2007;85:554–560.
- Di Stasi D, Bernasconi R, Marchioli R, Marfisi RM, Rossi G, Tognoni G, Tacconi MT. Early modifications of fatty acid composition in plasma phospholipids, platelets and mononucleates of healthy volunteers after low doses of n-3 polyunsaturated fatty acids. *Eur J Clin Pharmacol*. 2004;60:183–190.
- Donadio JV Jr, Larson TS, Bergstralh EJ, Grande JP. A randomized trial of high-dose compared with low-dose omega-3 fatty acids in severe IgA nephropathy. *J Am Soc Nephrol*. 2001;12:791–799.
- Donadio JV, Bergstralh EJ, Bibus DM, Grande JP. Is body size a biomarker for optimizing dosing of omega-3 polyunsaturated fatty acids in the treatment of patients with IgA nephropathy? *Clin J Am Soc Nephrol*. 2006;1:933–939.
- Hayakawa S, Yoshikawa D, Ishii H, Tanaka M, Kumagai S, Matsumoto M, Hayashi M, Sugiura T, Hayashi K, Ando H, Amano T, Murohara T. Association of plasma omega-3 to omega-6 polyunsaturated fatty acid ratio with complexity of coronary artery lesion. *Intern Med*. 2012;51:1009–1014.
- Hogg RJ, Lee J, Nardelli N, Julian BA, Cattran D, Waldo B, Wyatt R, Jennette JC, Sibley R, Hyland K, Fitzgibbons L, Hirschman G, Donadio JV Jr, Holub BJ; Southwest Pediatric Nephrology Study Group. Clinical trial to evaluate omega-3 fatty acids and alternate day prednisone in patients with IgA nephropathy: report from the Southwest Pediatric Nephrology Study Group. *Clin J Am Soc Nephrol*. 2006;1:467–474.
- Khaw KT, Friesen MD, Riboli E, Luben R, Wareham N. Plasma phospholipid fatty acid concentration and incident coronary heart disease in men and women: the EPIC-Norfolk prospective study. *PLoS Med*. 2012;9:e1001255.
- Laidlaw M, Holub BJ. Effects of supplementation with fish oil-derived n-3 fatty acids and gamma-linolenic acid on circulating plasma lipids and fatty acid profiles in women. *Am J Clin Nutr*. 2003;77:37–42.
- Lockyer S, Tzanetou M, Carvalho-Wells AL, Jackson KG, Minihane AM, Lovegrove JA. SATgene dietary model to implement diets of differing fat composition in prospectively genotyped groups (apoE) using commercially available foods. *Br J Nutr*. 2012;108:1705–1713.
- Lindberg M, Saltvedt I, Sletvold O, Bjerve KS. Long-chain n-3 fatty acids and mortality in elderly patients. *Am J Clin Nutr*. 2008;88:722–729.
- Matsuzaki M, Yokoyama M, Saito Y, Origasa H, Ishikawa Y, Oikawa S, Sasaki J, Hishida H, Itakura H, Kita T, Kitabatake A, Nakaya N, Sakata T, Shimada K, Shirato K, Matsuzawa Y; JELIS Investigators. Incremental effects of eicosapentaenoic acid on cardiovascular events in statin-treated patients with coronary artery disease. *Circ J*. 2009;73:1283–1290.
- Moyers B, Farzaneh-Far R, Harris WS, Garg S, Na B, Whooley MA. Relation of whole blood n-3 fatty acid levels to exercise parameters in patients with stable coronary artery disease (from the heart and soul study). *Am J Cardiol*. 2011;107:1149–1154.
- Mozaffarian D, Lemaitre RN, King IB, Song X, Huang H, Sacks FM, Rimm EB, Wang M, Siscovick DS. Plasma phospholipid long-chain omega-3 fatty acids and total and cause-specific mortality in older adults: a cohort study. *Ann Intern Med*. 2013;158:515–525.
- Nigam A, Frasure-Smith N, Lespérance F, Julien P. Relationship between n-3 and n-6 plasma fatty acid levels and insulin resistance in coronary patients with and without metabolic syndrome. *Nutr Metab Cardiovasc Dis*. 2009;19:264–270.
- Poppitt SD, Howe CA, Lithander FE, Silvers KM, Lin RB, Croft J, Ratnasabapathy Y, Gibson RA, Anderson CS. Effects of moderate-dose omega-3 fish oil on cardiovascular risk factors and mood after ischemic stroke: a randomized, controlled trial. *Stroke*. 2009;40:3485–3492.
- Pottala JV, Garg S, Cohen BE, Whooley MA, Harris WS. Blood eicosapentaenoic and docosahexaenoic acids predict all-cause mortality in patients with stable coronary heart disease: the Heart and Soul study. *Circ Cardiovasc Qual Outcomes* 2010;3:406–412.
- Raatz SK, Redmon JB, Wimmergren N, Donadio JV, Bibus DM. Enhanced absorption of n-3 fatty acids from emulsified compared with encapsulated fish oil. *J Am Diet Assoc*. 2009;109:1076–1081.
- Rupp H, Wagner D, Rupp T, Schulte LM, Maisch B. Risk stratification by the “EPA+DHA level” and the “EPA/AA ratio”. *Herz*. 2004;29:673–685.
- Schaeffer L, Gohlke H, Müller M, Heid IM, Palmer LJ, Kompauer I, Demmelmair H, Illig T, Koletzko B, Heinrich J. Common genetic variants of the FADS1 FADS2 gene cluster and their reconstructed haplotypes

- are associated with the fatty acid composition in phospholipids. *Hum Mol Genet.* 2006;15:1745–1756.
34. Shintani Y, Kawasaki T. The impact of a pure-EPA omega-3 fatty acid on coronary plaque stabilization: a plaque component analysis with 64-slice multi-detector row computed tomography [abstract]. *ACC.12.* 2012;59:E1731.
 35. Simon JA, Hodgkins ML, Browner WS, Neuhaus JM, Bernert JT Jr, Hulley SB. Serum fatty acids and the risk of coronary heart disease. *Am J Epidemiol.* 1995;142:469–476.
 36. Vedin I, Cederholm T, Freund-Levi Y, Basun H, Garlind A, Irving GF, Eriksdotter-Jönhagen M, Wahlund LO, Dahlman I, Palmblad J. Effects of DHA-rich n-3 fatty acid supplementation on gene expression in blood mononuclear leukocytes: the OmegAD study. *PLoS ONE.* 2012;7:e35425.
 37. Virtanen JK, Laukkanen JA, Mursu J, Voutilainen S, Tuomainen TP. Serum long-chain n-3 polyunsaturated fatty acids, mercury, and risk of sudden cardiac death in men: a prospective population-based study. *PLoS ONE.* 2012;7:e41046.
 38. Virtanen JK, Mursu J, Voutilainen S, Tuomainen TP. Serum long-chain n-3 polyunsaturated fatty acids and risk of hospital diagnosis of atrial fibrillation in men. *Circulation.* 2009;120:2315–2321.
 39. Wu JH, Lemaitre RN, King IB, Song X, Sacks FM, Heckbert SR, Siscovick DS, Mozaffarian D. Association of plasma phospholipid long-chain ω -3 fatty acids with incident atrial fibrillation in older adults: the cardiovascular health study. *Circulation.* 2012;125:1084–1093.
 40. Harris WS. The omega-3 index: clinical utility for therapeutic intervention. *Curr Cardiol Rep.* 2010;12:503–508.
 41. Fuchs B, Süß R, Teuber K, Eibisch M, Schiller J. Lipid analysis by thin-layer chromatography—a review of the current state. *J Chromatogr A.* 2011;1218:2754–2774.
 42. Siuzdak G. Mass Spectrometry for Biotechnology. San Diego, CA: Academic Press; 1996.
 43. Sandesara C, Chung M, Van Wagoner D, Barringer TA, Allen K, Ismail HM, Zimmerman B, Olshansky B. A randomized, placebo-controlled trial of omega-3 fatty acids for inhibition of supraventricular arrhythmias after cardiac surgery: the FISH trial. *J Am Heart Assoc.* 2012;1:e000547.
 44. Moltó-Puigmartí C, Plat J, Mensink RP, Müller A, Jansen E, Zeegers MP, Thijs C. FADS1 FADS2 gene variants modify the association between fish intake and the docosahexaenoic acid proportions in human milk. *Am J Clin Nutr.* 2010;91:1368–1376.
 45. Lu Y, Feskens EJ, Dollé ME, Imholz S, Verschuren WM, Müller M, Boer JM. Dietary n-3 and n-6 polyunsaturated fatty acid intake interacts with FADS1 genetic variation to affect total and HDL-cholesterol concentrations in the Doetinchem Cohort Study. *Am J Clin Nutr.* 2010;92:258–265.
 46. Martinelli N, Girelli D, Malerba G, Guarini P, Illig T, Trabetti E, Sandri M, Friso S, Pizzolo F, Schaeffer L, Heinrich J, Pignatti PF, Corrocher R, Olivieri O. FADS genotypes and desaturase activity estimated by the ratio of arachidonic acid to linoleic acid are associated with inflammation and coronary artery disease. *Am J Clin Nutr.* 2008;88:941–949.
 47. Gajos G, Zalewski J, Nessler J, Zmudka K, Undas A, Piwowarska W. Polyunsaturated omega-3 fatty acids improve responsiveness to clopidogrel after percutaneous coronary intervention in patients with cytochrome P450 2C19 loss-of-function polymorphism. *Kardiol Pol.* 2012;70:439–445.
 48. Yokoyama M, Origasa H, Matsuzaki M, Matsuzawa Y, Saito Y, Ishikawa Y, Oikawa S, Sasaki J, Hishida H, Itakura H, Kita T, Kitabatake A, Nakaya N, Sakata T, Shimada K, Shirato K; Japan EPA lipid intervention study (JELIS) Investigators. Effects of eicosapentaenoic acid on major coronary events in hypercholesterolaemic patients (JELIS): a randomised open-label, blinded endpoint analysis. *Lancet.* 2007;369:1090–1098.
 49. Luostarinen R, Boberg M, Saldeen T. Fatty acid composition in total phospholipids of human coronary arteries in sudden cardiac death. *Atherosclerosis.* 1993;99:187–193.
 50. Kromhout D, Giltay EJ, Geleijnse JM; Alpha Omega Trial Group. n-3 fatty acids and cardiovascular events after myocardial infarction. *N Engl J Med.* 2010;363:2015–2026.
 51. Lee SH, Shin MJ, Kim JS, Ko YG, Kang SM, Choi D, Jang Y, Chung N, Shim WH, Cho SY, Manabe I, Ha JW. Blood eicosapentaenoic acid and docosahexaenoic acid as predictors of all-cause mortality in patients with acute myocardial infarction. *Circulation J.* 2009;73:2250–2257.
 52. Ishikawa Y, Yokoyama M, Saito Y, Matsuzaki M, Origasa H, Oikawa S, Sasaki J, Hishida H, Itakura H, Kita T, Kitabatake A, Nakaya N, Sakata T, Shimada K, Shirato K, Matsuzawa Y; JELIS Investigators. Preventive effects of eicosapentaenoic acid on coronary artery disease in patients with peripheral artery disease. *Circ J.* 2010;74:1451–1457.
 53. Erkkilä AT, Matthan NR, Herrington DM, Lichtenstein AH. Higher plasma docosahexaenoic acid is associated with reduced progression of coronary atherosclerosis in women with CAD. *J Lipid Res.* 2006;47:2814–2819.
 54. Amano T, Matsubara T, Uetani T, Kato M, Kato B, Yoshida T, Harada K, Kumagai S, Kunimura A, Shinbo Y, Kitagawa K, Ishii H, Murohara T. Impact of omega-3 polyunsaturated fatty acids on coronary plaque instability: an integrated backscatter intravascular ultrasound study. *Atherosclerosis.* 2011;218:110–116.
 55. Berry JD, Prineas RJ, van Horn L, Passman R, Larson J, Goldberger J, Sneltselaar L, Tinker L, Liu K, Lloyd-Jones DM. Dietary fish intake and incident atrial fibrillation (from the Women's Health Initiative). *Am J Cardiol.* 2010;105:844–848.
 56. Shen J, Johnson VM, Sullivan LM, Jacques PF, Magnani JW, Lubitz SA, Pandey S, Levy D, Vasan RS, Quatromoni PA, Junyent M, Ordovas JM, Benjamin EJ. Dietary factors and incident atrial fibrillation: the Framingham Heart Study. *Am J Clin Nutr.* 2011;93:261–266.
 57. Savelieva I, Camm AJ. Polyunsaturated fatty acids for prevention of atrial fibrillation: a 'fishy' story. *Europace.* 2011;13:149–152.
 58. Calò L, Bianconi L, Colivicchi F, Lamberti F, Loricchio ML, de Ruvo E, Meo A, Pandozi C, Staibano M, Santini M. N-3 Fatty acids for the prevention of atrial fibrillation after coronary artery bypass surgery: a randomized, controlled trial. *J Am Coll Cardiol.* 2005;45:1723–1728.
 59. Sorice M, Tritto FP, Sordelli C, Gregorio R, Piazza L. N-3 polyunsaturated fatty acids reduces post-operative atrial fibrillation incidence in patients undergoing "on-pump" coronary artery bypass graft surgery. *Monaldi Arch Chest Dis.* 2011;76:93–98.
 60. Mozaffarian D, Marchioli R, Macchia A, Sillelta MG, Ferrazzi P, Gardner TJ, Latini R, Libby P, Lombardi F, O'Gara PT, Page RL, Tavazzi L, Tognoni G; OPERA Investigators. Fish oil and postoperative atrial fibrillation: the Omega-3 Fatty Acids for Prevention of Post-operative Atrial Fibrillation (OPERA) randomized trial. *JAMA.* 2012;308:2001–2011.
 61. Saravanan P, Bridgewater B, West AL, O'Neill SC, Calder PC, Davidson NC. Omega-3 fatty acid supplementation does not reduce risk of atrial fibrillation after coronary artery bypass surgery: a randomized, double-blind, placebo-controlled clinical trial. *Circ Arrhythm Electrophysiol.* 2010;3:46–53.
 62. Heine-Bröring RC, Brouwer IA, Proença RV, van Rooij FJ, Hofman A, Oudkerk M, Witteman JC, Geleijnse JM. Intake of fish and marine n-3 fatty acids in relation to coronary calcification: the Rotterdam Study. *Am J Clin Nutr.* 2010;91:1317–1323.
 63. He K, Liu K, Daviglius ML, Mayer-Davis E, Jenny NS, Jiang R, Ouyang P, Steffen LM, Siscovick D, Wu C, Barr RG, Tsai M, Burke GL. Intakes of long-chain n-3 polyunsaturated fatty acids and fish in relation to measurements of subclinical atherosclerosis. *Am J Clin Nutr.* 2008;88:1111–1118.
 64. Lindqvist HM, Sandberg AS, Fagerberg B, Hulthe J. Plasma phospholipid EPA and DHA in relation to atherosclerosis in 61-year-old men. *Atherosclerosis.* 2009;205:574–578.
 65. Sekikawa A, Kadowaki T, El-Saed A, Okamura T, Sutton-Tyrrell K, Nakamura Y, Evans RW, Mitsunami K, Edmundowicz D, Nishio Y, Nakata K, Kadota A, Otake T, Miura K, Choo J, Abbott RD, Kuller LH, Curb JD, Ueshima H; ERA JUMP Study group. Differential association of docosahexaenoic and eicosapentaenoic acids with carotid intima-media thickness. *Stroke.* 2011;42:2538–2543.
 66. Sala-Vila A, Cofán M, Pérez-Heras A, Núñez I, Gilabert R, Junyent M, Mateo-Gallego R, Cenarro A, Civeira F, Ros E. Fatty acids in serum phospholipids and carotid intima-media thickness in Spanish subjects with primary dyslipidemia. *Am J Clin Nutr.* 2010;92:186–193.

KEY WORDS: cardiovascular diseases ■ eicosapentaenoic acid ■ fatty acids, omega-3 ■ fish oils

Omega-3 Fatty Acid Blood Levels: Clinical Significance and Controversy

H. Robert Superko, Scott M. Superko, Khurram Nasir, Arthur Agatston and Brenda C. Garrett

Circulation. 2013;128:2154-2161

doi: 10.1161/CIRCULATIONAHA.113.002731

Circulation is published by the American Heart Association, 7272 Greenville Avenue, Dallas, TX 75231

Copyright © 2013 American Heart Association, Inc. All rights reserved.

Print ISSN: 0009-7322. Online ISSN: 1524-4539

The online version of this article, along with updated information and services, is located on the
World Wide Web at:

<http://circ.ahajournals.org/content/128/19/2154>

Permissions: Requests for permissions to reproduce figures, tables, or portions of articles originally published in *Circulation* can be obtained via RightsLink, a service of the Copyright Clearance Center, not the Editorial Office. Once the online version of the published article for which permission is being requested is located, click Request Permissions in the middle column of the Web page under Services. Further information about this process is available in the [Permissions and Rights Question and Answer](#) document.

Reprints: Information about reprints can be found online at:
<http://www.lww.com/reprints>

Subscriptions: Information about subscribing to *Circulation* is online at:
<http://circ.ahajournals.org/subscriptions/>